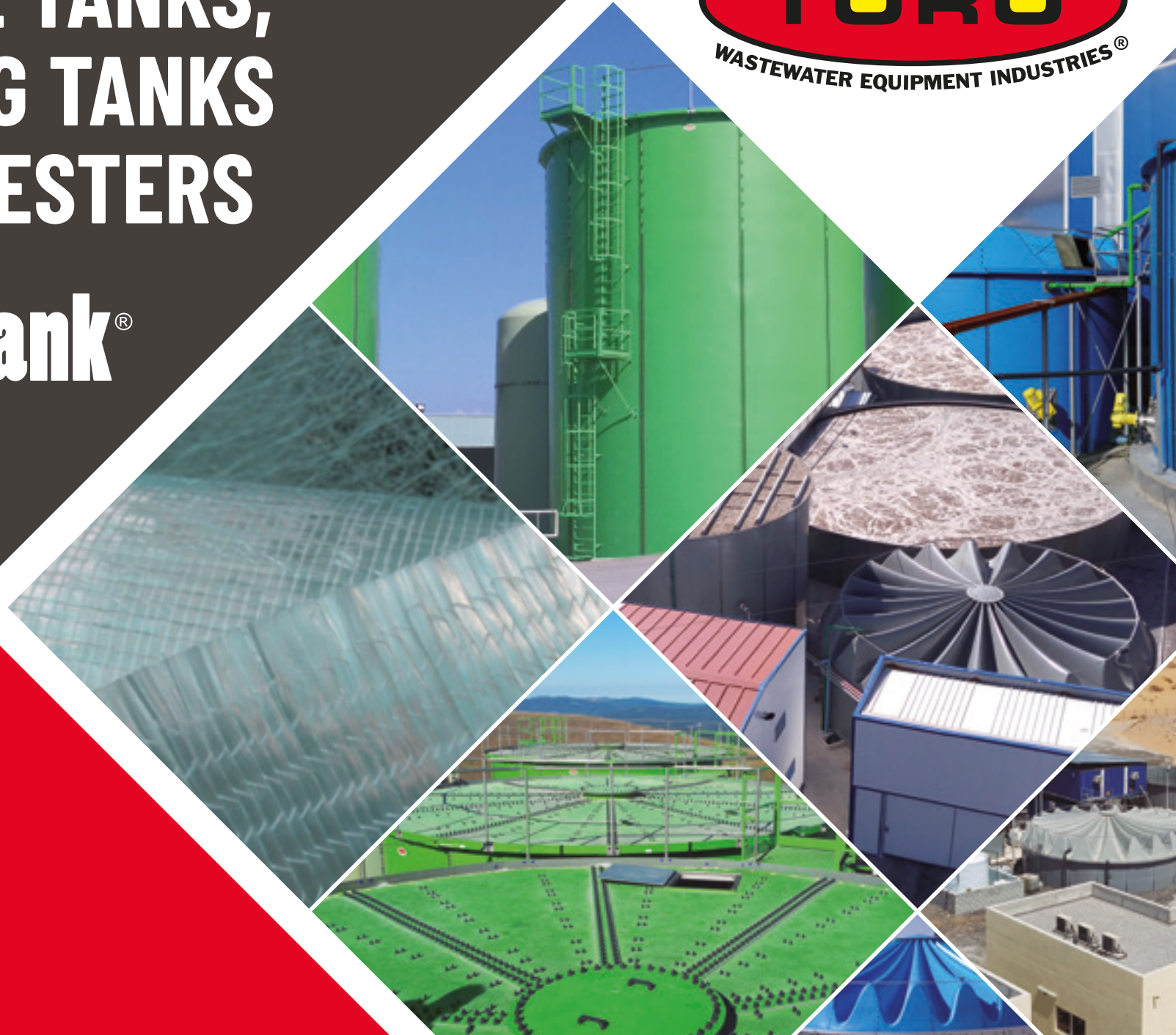


# STORAGE TANKS, SETTLING TANKS AND DIGESTERS

## W-Tank<sup>®</sup>



**W-TANK<sup>®</sup>**  
MADE FROM RESINS  
WITH HIGH CHEMICAL  
RESISTANCE



# Storage tanks | Technical specifications

No. plates	Diameter	Storage tank volumes for different heights in metres										
		H=2	H=3	H=4	H=5	H=5.5a	H=6	H=7	H=8	H=9	H=10	H=11
Units	Ø (m)	(m <sup>3</sup> )	(m <sup>3</sup> )	(m <sup>3</sup> )	(m <sup>3</sup> )	(m <sup>3</sup> )	(m <sup>3</sup> )	(m <sup>3</sup> )	(m <sup>3</sup> )	(m <sup>3</sup> )	(m <sup>3</sup> )	(m <sup>3</sup> )
6	4.3	29	44	59	73	81	88	103	117	132	147	162
7	5.1	41	61	82	102	112	123	143	163	184	204	225
8	5.8	52	78	104	131	144	157	183	209	235	261	287
9	6.5	66	99	132	165	182	198	231	264	297	330	363
10	7.2	82	122	163	204	224	245	286	326	367	408	449
11	7.9	99	148	197	247	271	296	345	395	444	494	543
12	8.6	117	176	235	294	323	352	411	470	529	587	646
13	9.4	138	207	276	345	379	414	483	551	620	689	758
14	10.1	160	240	320	400	440	480	560	640	720	799	879
15	10.8	184	275	367	459	505	551	642	734	826	918	1,010
16	11.5	209	313	418	522	574	627	731	835	940	1,044	1,149
17	12.3	236	354	472	589	648	707	825	943	1,061	1,179	1,297
18	13.0	264	396	529	661	727	793	925	1,057	1,189	1,322	1,454
19	13.7	294	442	589	736	810	883	1,031	1,178	1,325	1,472	1,620
20	14.4	326	489	653	816	897	979	1,142	1,305	1,468	1,632	1,795
21	15.1	360	540	720	899	989	1,079	1,259	1,439	1,619	1,799	1,979
22	15.9	395	592	790	987	1,086	1,185	1,382	1,579	1,777	1,974	2,172
23	16.6	432	647	863	1,079	1,187	1,295	1,510	1,726	1,942	2,158	2,374
24	17.3	470	705	940	1,175	1,292	1,410	1,645	1,880	2,115	2,349	2,584
25	18.0	510	765	1,020	1,275	1,402	1,530	1,785	2,039	2,294	2,549	2,804
26	18.7	551	827	1,103	1,379	1,517	1,654	1,930	2,206	2,482	2,757	3,033
27	19.5	595	892	1,189	1,487	1,635	1,784	2,081	2,379	2,676	2,974	3,271
28	20.2	640	959	1,279	1,599	1,759	1,919	2,238	2,558	2,878	3,198	3,518
29	20.9	686	1,029	1,372	1,715	1,887	2,058	2,401	2,744	3,087	3,430	3,773
30	21.6	734	1,101	1,468	1,836	2,019	2,203	2,570	2,937	3,304	3,671	4,038
31	22.3	784	1,176	1,568	1,960	2,156	2,352	2,744	3,136	3,528	3,920	4,312
32	23.1	835	1,253	1,671	2,088	2,297	2,506	2,924	3,341	3,759	4,177	4,594
33	23.8	888	1,333	1,777	2,221	2,443	2,665	3,109	3,554	3,998	4,442	4,886
34	24.5	943	1,415	1,886	2,358	2,593	2,829	3,301	3,772	4,244	4,715	5,187
35	25.2	999	1,499	1,999	2,498	2,748	2,998	3,498	3,997	4,497	4,997	5,496
36	25.9	1,057	1,586	2,115	2,643	2,907	3,172	3,700	4,229	4,758	5,286	5,815
37	26.7	1,117	1,675	2,234	2,792	3,071	3,350	3,909	4,467	5,026	5,584	6,142

No. plates	Diameter	Storage tank volumes for different heights in metres										
		H=2	H=3	H=4	H=5	H=5.5a	H=6	H=7	H=8	H=9	H=10	H=11
Units	Ø (m)	(m <sup>3</sup> )	(m <sup>3</sup> )	(m <sup>3</sup> )	(m <sup>3</sup> )	(m <sup>3</sup> )	(m <sup>3</sup> )	(m <sup>3</sup> )	(m <sup>3</sup> )	(m <sup>3</sup> )	(m <sup>3</sup> )	(m <sup>3</sup> )
38	27.4	1,178	1,767	2,356	2,945	3,239	3,534	4,123	4,712	5,301	5,890	6,479
39	28.1	1,241	1,861	2,482	3,102	3,412	3,722	4,343	4,963	5,584	6,204	6,824
40	28.8	1,305	1,958	2,610	3,263	3,589	3,916	4,568	5,221	5,874	6,526	7,179
41	29.5	1,371	2,057	2,743	3,428	3,771	4,114	4,800	5,485	6,171	6,857	7,542
42	30.3	1,439	2,159	2,878	3,598	3,957	4,317	5,037	5,756	6,476	7,195	7,915
43	31.0	1,508	2,263	3,017	3,771	4,148	4,525	5,279	6,034	6,788	7,542	8,296
44	31.7	1,579	2,369	3,159	3,948	4,343	4,738	5,528	6,317	7,107	7,897	8,686
45	32.4	1,652	2,478	3,304	4,130	4,543	4,956	5,782	6,608	7,434	8,260	9,086
46	33.2	1,726	2,589	3,452	4,315	4,747	5,179	6,042	6,905	7,768	8,631	9,494
47	33.9	1,802	2,703	3,604	4,505	4,956	5,406	6,307	7,208	8,109	9,010	9,911
48	34.6	1,880	2,819	3,759	4,699	5,169	5,639	6,578	7,518	8,458	9,398	10,338
50	35.3	1,954	2,931	3,908	4,885	5,373	5,862	6,839	7,816	8,792	9,769	10,746
51	36.0	2,033	3,049	4,066	5,082	5,590	6,098	7,115	8,131	9,148	10,164	11,181
52	36.7	2,113	3,170	4,227	5,283	5,812	6,340	7,397	8,453	9,510	10,567	11,623
53	37.4	2,195	3,293	4,391	5,488	6,037	6,586	7,684	8,782	9,879	10,977	12,075
54	38.1	2,279	3,419	4,558	5,698	6,267	6,837	7,977	9,116	10,256	11,395	12,535

Tanks in which their Ø and volume can vary depending on design conditions.

## SUPPLY KIT | STORAGE TANK

- Plates.
- Manway.
- Screws - washers - nuts - gaskets.
- Seal with concrete base and sealing primer.
- Assembly instructions.
- Technical brochure and specifications.
- Compliance plan, construction plan for standard floor slab, fasteners and seals.





# Settling tanks | Technical specifications

Plates	Settling tank surface area for height in metres												
	Nº	H=2				H=3				H=4			
		Volume	Ø	Surface area	Bridge weight	Volume	Ø	Surface area	Bridge weight	Volume	Ø	Surface area	Bridge weight
m³	m	m²	kg	m³	m	m²	kg	m³	m	m²	kg		
6	29	4.3	15	875	44	4.3	15	900	59	4.3	15	925	
7	41	5.1	20	950	61	5.1	20	975	82	5.1	20	1,000	
8	52	5.8	26	1,050	78	5.8	26	1,075	104	5.8	26	1,100	
9	66	6.5	33	1,100	99	6.5	33	1,150	132	6.5	33	1,200	
10	82	7.2	41	1,200	122	7.2	41	1,250	163	7.2	41	1,300	
11	99	7.9	49	1,250	148	7.9	49	1,300	197	7.9	49	1,475	
12	117	8.6	59	1,350	176	8.6	59	1,400	235	8.6	59	1,450	
13	138	9.4	69	1,425	207	9.4	69	1,450	276	9.4	69	1,550	
14	160	10.1	80	1,500	240	10.1	80	1,550	320	10.1	80	1,600	
15	184	10.8	92	1,575	275	10.8	92	1,650	367	10.8	92	1,700	
16	209	11.5	104	1,650	313	11.5	104	1,700	418	11.5	104	1,750	
17	236	12.3	118	1,775	354	12.3	118	1,775	472	12.3	118	1,850	
18	264	13.0	132	1,800	396	13.0	132	1,850	529	13.0	132	1,900	
19	294	13.7	147	1,850	442	13.7	147	1,900	589	13.7	147	1,950	
20	326	14.4	163	1,900	489	14.4	163	1,950	653	14.4	163	2,000	
21	360	15.1	180	1,900	540	15.1	180	1,975	720	15.1	180	2,025	
22	395	15.9	197	1,925	592	15.9	197	2,000	790	15.9	197	2,075	
23	432	16.6	216	1,975	647	16.6	216	2,050	863	16.6	216	2,125	
24	470	17.3	235	2,025	705	17.3	235	2,100	940	17.3	235	2,175	
25	510	18.0	255	2,050	765	18.0	255	2,125	1,020	18.0	255	2,200	
26	551	18.7	276	2,075	827	18.7	276	2,150	1,103	18.7	276	2,225	
27	595	19.5	297	2,100	892	19.5	297	2,175	1,189	19.5	297	2,250	
28	640	20.2	320	2,125	959	20.2	320	2,200	1,279	20.2	320	2,275	
29	686	20.9	343	2,175	1,029	20.9	343	2,250	1,372	20.9	343	2,325	
30	734	21.6	367	2,225	1,101	21.6	367	2,300	1,468	21.6	367	2,375	
31	784	22.3	392	2,275	1,176	22.3	392	2,350	1,568	22.3	392	2,325	
32	835	23.1	417	2,325	1,253	23.1	417	2,400	1,671	23.1	417	2,475	
33	888	23.8	444	2,375	1,333	23.8	444	2,450	1,777	23.8	444	2,525	
34	943	24.5	471	2,425	1,415	24.5	471	2,500	1,886	24.5	471	2,575	
35	999	25.2	499	2,475	1,499	25.2	499	2,550	1,999	25.2	499	2,625	
36	1,057	25.9	528	2,500	1,586	25.9	528	2,600	2,115	25.9	528	2,700	
37	1,117	26.7	558	2,600	1,675	26.7	558	2,700	2,234	26.7	558	2,800	
38	1,178	27.4	589	2,700	1,767	27.4	589	2,800	2,356	27.4	589	2,900	
39	1,241	28.1	620	2,750	1,861	28.1	620	2,900	2,482	28.1	620	3,000	
40	1,305	28.8	652	2,850	1,958	28.8	652	2,950	2,610	28.8	652	3,050	
41	1,371	29.5	685	2,950	2,057	29.5	685	3,050	2,743	29.5	685	3,150	
42	1,439	30.3	719	3,050	2,159	30.3	719	3,150	2,878	30.3	719	3,250	
43	1,508	31.0	754	3,125	2,263	31.0	754	3,200	3,017	31.0	754	3,325	
44	1,579	31.7	789	3,200	2,369	31.7	789	3,300	3,159	31.7	789	3,400	
45	1,652	32.4	826	3,250	2,478	32.4	826	3,350	3,304	32.4	826	3,450	
46	1,726	33.2	863	3,325	2,589	33.2	863	3,425	3,452	33.2	863	3,525	
47	1,802	33.9	901	3,375	2,703	33.9	901	3,500	3,604	33.9	901	3,600	
48	1,880	34.6	939	3,450	2,819	34.6	939	3,550	3,759	34.6	939	3,650	
50	1,954	35.3	976	3,600	2,931	35.3	976	3,700	3,908	35.3	976	3,800	
51	2,033	36.0	1,016	3,700	3,049	36.0	1,016	3,850	4,066	36.0	1,016	3,900	
52	2,113	36.7	1,056	3,800	3,170	36.7	1,056	3,925	4,227	36.7	1,056	4,050	
53	2,195	37.4	1,097	3,850	3,293	37.4	1,097	3,975	4,391	37.4	1,097	4,100	
54	2,279	38.1	1,139	3,900	3,419	38.1	1,139	4,025	4,558	38.1	1,139	4,150	

Volume table for plate width: 2,420mm-



W-Tank® Settling Tank



W-Tank® Settling Tank

## SUPPLY KIT | SETTLING TANK

- Identical to the storage tank kit, with the addition of:
  - Adjustable trapezoidal chute in GRP.
  - Fat and floating debris deflector in GRP.
  - Screws and brackets in AISI 304.
  - Wheel treads included.
- Excluding:
  - Settling tower.
  - Scraper bridge.
  - Optional manhole.

## STORAGE TANK

**FLANGED**

**FLANGELESS**

**WITH W-TANK® ANCHORING SLOT**

**WITHOUT ANCHORING SLOT**

**ISOMETRIC VIEW OF TANK**

**WITH SEALING SLOT**

**SIN RANURA DE SELLADO**

**EARTHQUAKE/LARGE TANK FASTENER**

## SETTLING TANK

**ISOMETRIC VIEW OF TANK**

**A-A CROSS SECTION**

**GROUND PLAN**

**DETAIL OF PLATE**

**TANK EXTERIOR**

**TANK INTERIOR**

# Covers | Hypar · Flat · Membrane

HYPAR model	DIAMETER	
	STORAGE TANK (m)	HYPAR (m)
G2 D4,3	4.3	4.6
G3 D5,1	5.1	5.4
G3 D5,8	5.8	6.1
G12 D6,5	6.5	6.8
G12 D7,2	7.2	7.5
G12 D7,9	7.9	8.2
G15 D8,6	8.6	8.9
G15 D9,4	9.4	9.7
G15 D10,1	10.1	10.4
G18 D10,8	10.8	11.1
G18 D11,5	11.5	11.8
G21 D12,3	12.3	12.6
G21 D13,0	13.0	13.3
G21 D13,7	13.7	14.0
G25 D14,4	14.4	14.7
G25 D15,1	15.1	15.4
G25 D14,4	15.9	16.2
G25 D16,6	16.6	16.9
G25 D17,3	17.3	17.6
G30 D18,0	18.0	18.3
G30 D18,7	18.7	19.0
G30 D19,5	19.5	19.8
G30 D20,2	20.2	20.5
G30 D20,9	20.9	21.2
G35 D21,6	21.6	21.9
G35 D22,3	22.3	22.6
G35 D23,1	23.1	23.4
G35 D23,8	23.8	24.1
G35 D24,5	24.5	24.8

G indicates the number of segments on the HYPAR cover. Larger Ø available upon request

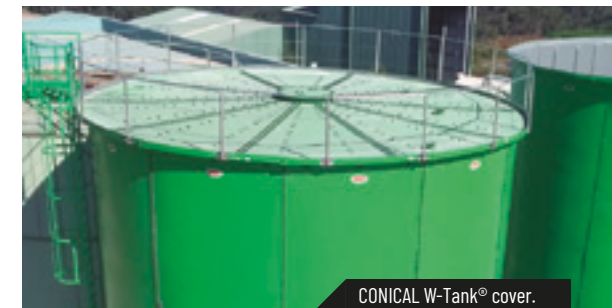
- Types of flat cover fastening:
  - Standard, cover screwed to tank. Seamless bolted joint.
  - Seal between joints and fastening to tank.
  - 5-20 mbar pressure, recommended for digester tanks.
- Quotations for roofs subject to client specifications, load to be supported, installation of stirrers, strainers, walkways and other project components.
- We supply tarpaulin and mesh covers for special purposes.



HYPAR W-Tank® cover.



FLAT W-Tank® hermetic cover for digesters



CONICAL W-Tank® cover.

## SUPPLY KIT HYPAR AND FLAT COVERS

- Roof components in GRP.
- Fastening brackets for attachment to tank.
- Screws - washers - nuts.
- Structural components.
- Assembly instructions.
- Technical brochure and specifications.
- Compliance plan, fasteners and seals.

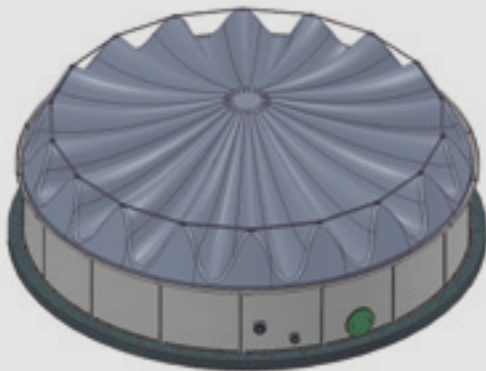


MEMBRANE/GASOMETRE W-Tank® cover.

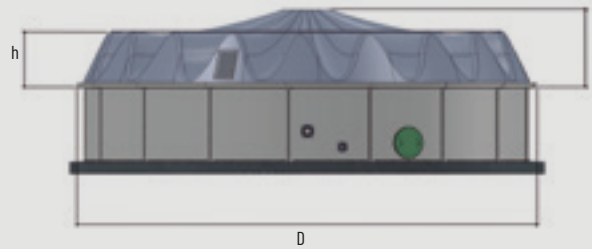


## HYPAR COVER

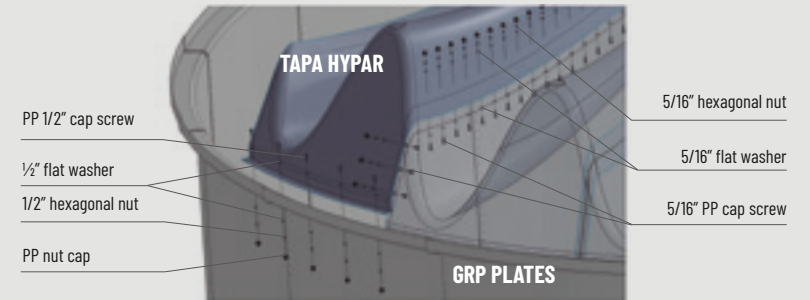
ISOMETRIC VIEW OF TANK



AERIAL VIEW OF TANK

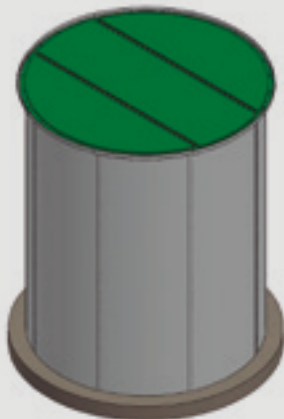


DETAIL OF SCREWS ON HYPAR COVER



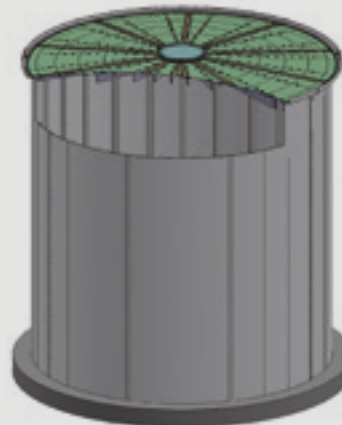
## OTHER COVERS

FLAT



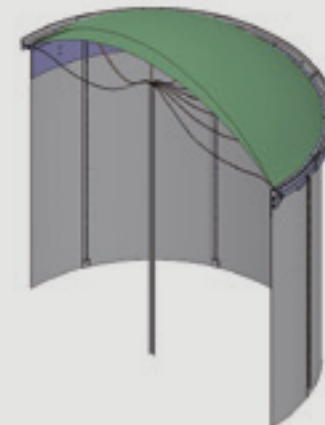
ISOMETRIC VIEW OF TANK

CONICAL



ISOMETRIC VIEW OF TANK

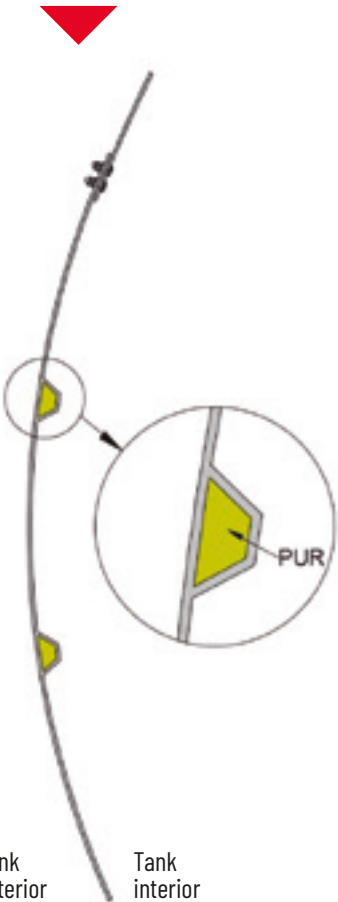
MEMBRANE/GASOMETER



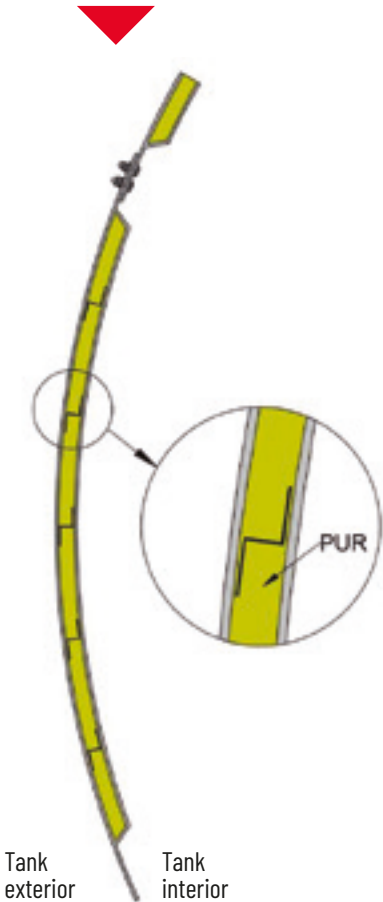
ISOMETRIC VIEW OF TANK

# Plate types / cross section

## SALAMANCA Plate



## BURGOS Plate



## VALLADOLID Plate



## BENEFITS AND USES

### SALAMANCA PLATE

- General-purpose tanks

### BURGOS PLATE

- Thermally insulated tanks
- PUR - Insulation coefficient 40mm of PUR thickness

### VALLADOLID PLATE

- 100% monolithic
- For vertical loads
- Settling tanks
- Allows machining on surface



# Optional extras

Corrosion resistant ladder / GRP



Welded GRP Flange



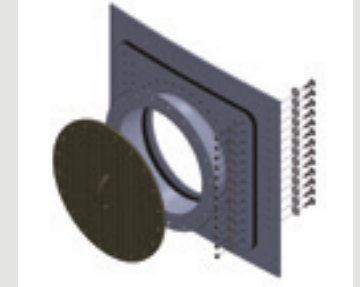
Single flange



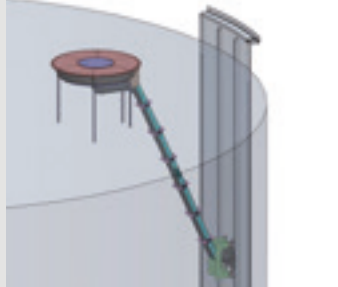
Double flange



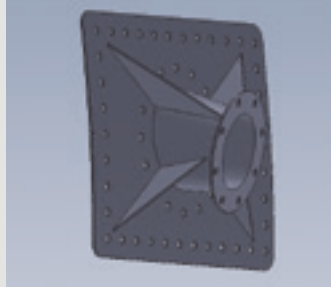
Manway



SBR-1900 decanter kit



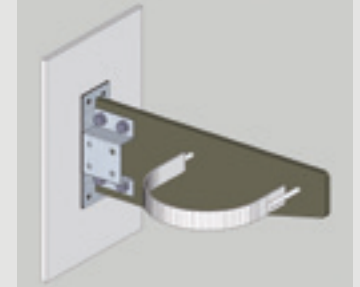
Stirrer bracket



Degassing hopper



Stainless steel/GRP tube bracket



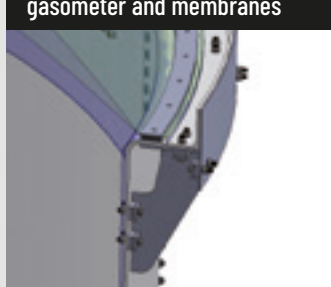
GRP floor



SBR Decanter <= 90 m3



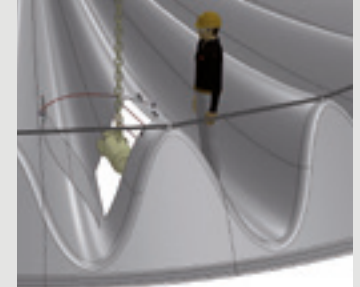
Fastening system for gasometer and membranes



Access window in cover



Access window in stirrers



# Manufacturing process

## FLEX MOLDING

This manufacturing process uses cutting edge technology in the composites sector.

Flex moulding offers a number of advantages over traditional lamination and infusion processes:

- Improved mechanical properties, due to increased fibre content.
- Improved product performance, due to reduced weight as a result of lower quantities of resin used.
- Environmentally friendly process. Components are constructed using closed moulds, improving environmental conditions and workspace quality. This also allows us to reduce CO2 emissions.
- This process allows us to control the thickness and orientation of the materials.



**CUTTING EDGE TECHNOLOGY**



**LOW CO2 EMISSIONS**



**ECO-FRIENDLY PROCESS**



**CONTROLLED THICKNESS**



FLEX MOLDING manufacturing process.



Soaking of resins.



Painting phase.

## PLATE COMPOSITION

### Outer chemical barrier:

- 600µm isophthalic gel coat (nautical quality) with UV stabiliser.

### Laminate:

- Purpose-built balanced multi-axial fibreglass
- Surfacing veil, high absorptive capacity.
- Specific resin for flex moulding vacuum infusion process in vinylester quality.
- Food-grade resin.

### Interior finish:

- Interior surface finished with enriched isophthalic resin and surface veil with high resin absorption capacity.
- Only in food-grade or high chemical resistance projects: application of specific gel coat with 500µm finish.

## OTHER MATERIALS USED

- **Standard-format Toro Bolt screws:** polypropylene inner tank head, galvanised steel structure and polypropylene exterior cap. Other properties optional.
- **EPDM (Ethylene Propylene Diene Monomer)** elastomer gasket, offering excellent resistance to abrasion and wear. Good resistance to atmospheric, acidic and alkaline agents, and to chemical products in general. The working temperature oscillates between -40°C and 130°C.
- **Screw and tank seals according to project specifications or tank contents.** Sealed with polyurethane-based mastic or nylon gasket.
- **Nylon/EPDM gasket,** working temperature range -40°C to 90°C, fatigue strength, high shock absorption, good sliding properties, excellent resistance to wear and self-extinguishing.
- **Internal polyurethane foam (PUR) cores** as in the Burgos and Salamanca plates.



GRP chemical resistance table (EN ISO 175)

Fluid	Resina isoftálica
Wastewater pH 3-9	● 40°C
Seawater	● 50°C
Drinking water	● 70°C
Hydrochloric acid 10%	● 30°C
Hydrochloric acid 20%	● 30°C
Hydrochloric acid 35%	● 30°C
Sulphuric acid 10%	● 30°C
Sulphuric acid 60%	●
Acetic acid 10%	● 30°C
Acetic acid 20%	●
Acetic acid 100%	●
Nitric acid 10%	●
Nitric acid 30%	●
Formic acid 20%	● 30°C
Ac. Fosfórico 20%	● 30°C
Benzyl alcohol	● 30°C
Ethanol 96-100%	● 30°C
Caustic soda 10%	●
Caustic soda 25%	●
Caustic soda 50%	●
Methanol 100%	●

To improve resistance to aggressive chemical products and high temperatures, vinylester is used.

● Recommended ● No recommended

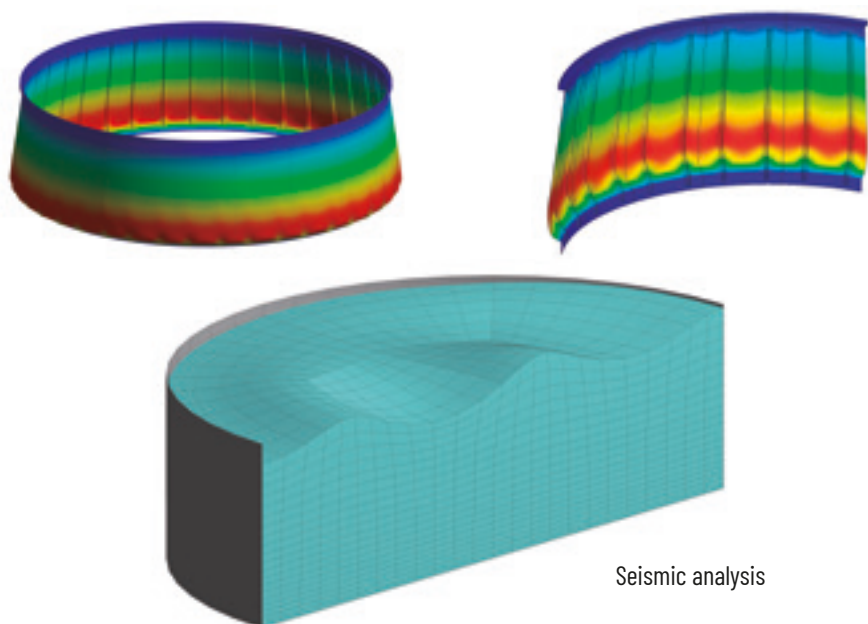
SPECIFICATIONS	STANDARD	VALUE
Barcol hardness	EN ISO 53270	≥40
Glass mass content	EN ISO 3451-1	[63 - 71] %
Resistance to traction	EN ISO 527-4	[224 - 351] MPa
Elastic modulus	EN ISO 527-4	[19.857 - 26.304] MPa
Shearing deformation	EN ISO 527-4	[3,1 - 4,1] %
Flexural strength	EN ISO 14125	[279 - 468] MPa
Flexural modulus	EN ISO 14125	[20.924 - 22.746] MPa
HDT	EN ISO 75-3	[91,2 - 95,2] °C
Composite density	EN ISO 1183-1, Método A	1875 Kg/m <sup>3</sup>
H2O absorption (2d)	EN ISO 62, Método 1	≤0,2 %
Thermal cond. Coef. Burgos	EN ISO 11357-3	0,02694 W/m·K
Thermal transf. coef; Burgos		0,58123 W/m <sup>2</sup> ·K



# Tests and calculations

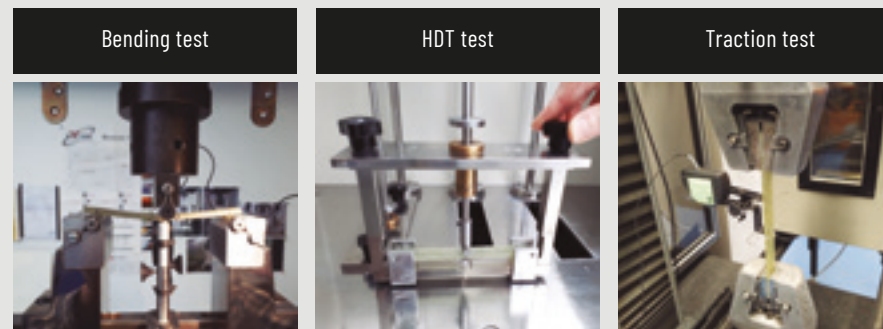
## QUALITY TESTS

All storage tanks, settling tanks and covers have been analysed and have undergone a number of different quality tests and trials in collaboration:

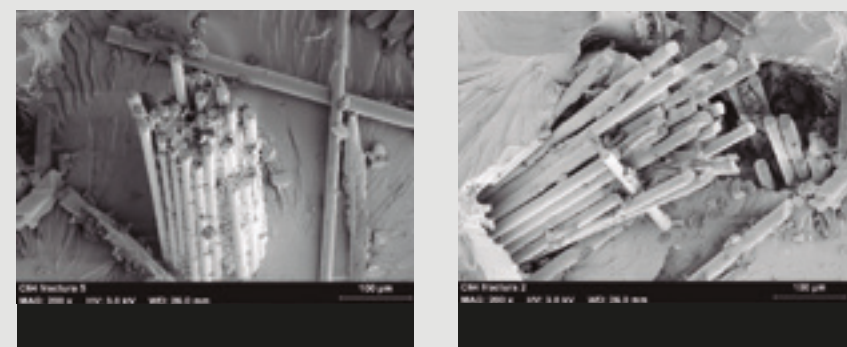


Seismic analysis

## LABORATORY TESTS



## Scanning electron microscope (SEM) test



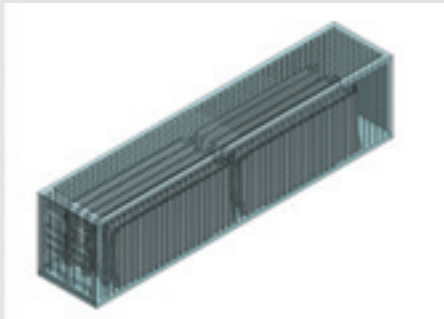




W-Tank® dispatch area. Factory Toro Equipment in Villavaquerín -Spain

## DELIVERY

- W-Tank® plates are supplied in **metallic or wooden packaging**, facilitating mass delivery.
- Storage tanks, settling tanks and covers **can be transported in 20-foot and 40-foot high-cube shipping containers**, as well as in conventional lorries.
- This **ease of transport** allows us to ship **W-Tank® all over the world**.



W-Tank® storage tank with 36 Salamanca plates, H=5m, D=25m and 2,534m<sup>3</sup> capacity transported in a 40-foot container.



W-Tank® with H=11m, D=13.2m and 1,505m<sup>3</sup> capacity transported in a lorry.

## EASY TO ASSEMBLE

- W-Tank® storage and settling tanks are quick and **easy to assemble and require few logistical resources**.
- The product **can be disassembled and moved for use in a different location**.
- **Assembly instructions** are provided.



WATCH  
VIDEO

## EQUIPMENT

● Standard equipment ● Optinal equipment

BODY	STORAGE TANK	SETTLING TANK	COVER
Composite material - Isophthalic resin	●	●	●
Composite material - Vinylester resin	●	●	●
Connection flanges	●	●	●
Manhole	●	●	●
Exterior cat ladder	●	●	●
Exterior extension ladder	●	●	●
Exterior spiral ladder	●	●	●
Interior ladder	●	●	●
Access walkway	●	●	●
45x45 window			●

DOCUMENTS	DEPÓSITO	DECANTADOR	CUBIERTA
Compliance plan - concrete floor construction plan - fasteners and seals*	●	●	●
Technical brochure and specifications	●	●	●
Assembly instructions	●	●	●
Calculation report	●	●	●
Seismic area sizing	●	●	●
Wind load sizing	●	●	●
Snow load sizing	●	●	●

\* Acceleration in OG rock has been taken into consideration.



● Estandard equipment ● Optional equipment

CERTIFICATES	DEPÓSITO	DECANTADOR	CUBIERTA
Quality certificate	●	●	●
Warranty certificate	●	●	●
Food-grade certificate	●	●	●
Tests and trials certificate	●	●	●

COLOUR	DEPÓSITO	DECANTADOR	CUBIERTA
RAL 7035 - Light grey	●	●	●
RAL 6018 - Yellow green	●	●	●
RAL 5012 - Light blue	●	●	●
RAL 7005 - Mouse grey	●	●	●
Any colour from RAL chart	●	●	●

OTHER	DEPÓSITO	DECANTADOR	CUBIERTA
Assembly tools	●	●	●
Assembly and disassembly	●	●	●
40&63 Defender® rotary sieve	●	●	●
HPS M&L Defender® rotary sieve	●	●	●
Defender® static sieve	●	●	●

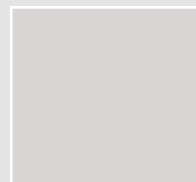
### NOTES:

- Optional equipment is charged extra. Contact us for more information and prices.
- Sizing for seismic areas, snow load and wind load: consult the Technical Department.
- Technical development may lead to changes to some specifications. See [toroequipment.com](http://toroequipment.com)





## COLOURS



STANDARD COLOUR  
**LIGHT GREY**  
RAL 7035



**YELLOW GREEN**  
RAL 6018



**LIGHT BLUE**  
RAL 5012



**MOUSE GREY**  
RAL 7005

- W-Tank® storage tanks, settling tanks and covers are made in RAL 7035 **LIGHT GREY** as standard. Another 3 colours are available as optional extras on the interior and exterior: **MOUSE GREY**, **YELLOW GREEN** and **LIGHT BLUE**.

- Upon request, we can manufacture tanks in any colour from the RAL chart.

*(Colors are approximate to RAL table)*

## BENEFITS

- Excellent resistance to corrosion and rust.
- Very lightweight.
- Easy to transport.
- Installation available all over the world.
- Tanks may be buried.
- Minimal construction time.
- Demountable and reusable.
- Minimal maintenance required.
- Easy to install accessories.

## USES

- Wastewater.
- Drinking water.
- Desalination.
- Bulk dry goods.
- Agriculture.
- Waste.
- Separations in existing tanks.
- Biogas.
- Food.
- Chemical products (Consult Compatibility Table).





Factory Villavaquerín - Valladolid

## WORLD LEADERS

- Algeria
- Costa Rica
- Guatemala
- Lebanon
- Peru
- Slovenia
- United Arab Emirates
- Argentina
- Croatia
- Holland
- Lithuania
- Philippines
- South Africa
- Australia
- Dominican Republic
- Hungary
- Luxembourg
- Poland
- Spain
- Austria
- Ecuador
- Indonesia
- Malaysia
- Portugal
- Switzerland
- Belgium
- Egypt
- Iran
- Mexico
- Qatar
- Thailand
- Brazil
- Estonia
- Ireland
- Montenegro
- Romania
- Trinidad and Tobago
- Bulgaria
- Finland
- Israel
- Morocco
- Russia
- Saudi Arabia
- Tunisia
- Canada
- France
- Italy
- Netherlands
- Serbia
- Turkey
- Chile
- Germany
- Japan
- Nicaragua
- Seychelles
- UK
- China
- Greece
- Jordan
- Pakistan
- Singapore
- Colombia
- Latvia
- Panama
- Ukraine

**FOUNDED**  
1989



+34 983 403 047  
toro@toroequipment.com  
toroequipment.com

### FACTORY

Ctra. Nacional VP-3302, km 11  
47329 Villavaquerín  
Valladolid (España)

### FACTORY AND OFFICES

C/ Sauce s/n  
47193 La Cistérniga  
Valladolid (España)



© TORO EQUIPMENT 2020  
Storage tanks, Settling tanks & Digesters  
**W-Tank®**